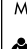


LOC/DME I-SNA 111.75 Chan 54(Y)	APP CRS 194°	Rwy Idg 5701	TDZE 55	Apt Elev 56
--	------------------------	-----------------	------------	----------------

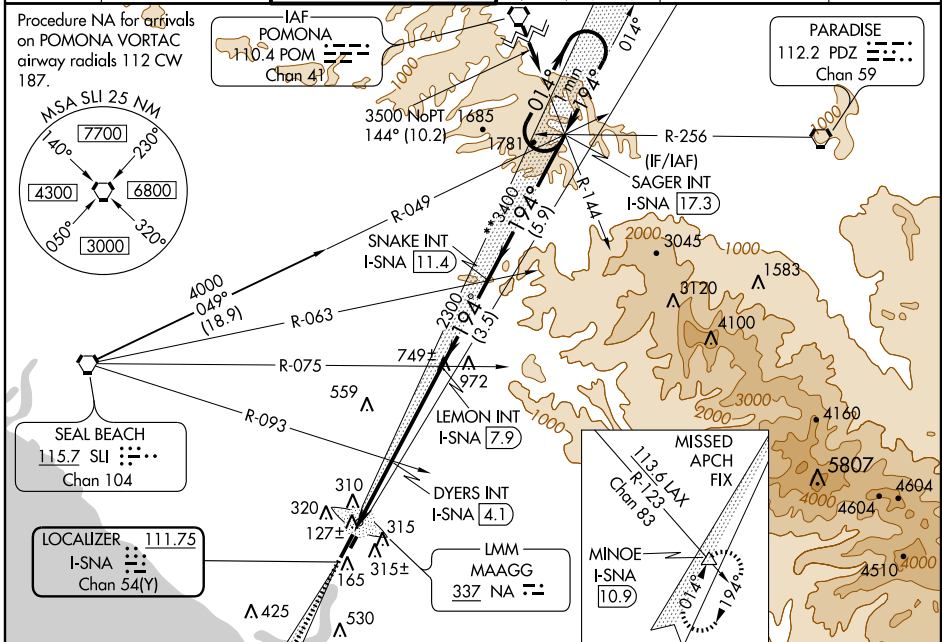
ILS or LOC RWY 19R

SANTA ANA/ JOHN WAYNE AIRPORT-ORANGE COUNTY (SNA)

⚠ When local altimeter setting not received, use Fullerton altimeter setting and increase all DA 36 feet and all MDA 40 feet, and increase DYERS fix minimums S-LOC 19R and circling Cat C visibilities ¼ mile. *RVR 1800 authorized with the use of FD or AP or HUD to DA. VDP NA when using Fullerton altimeter setting.

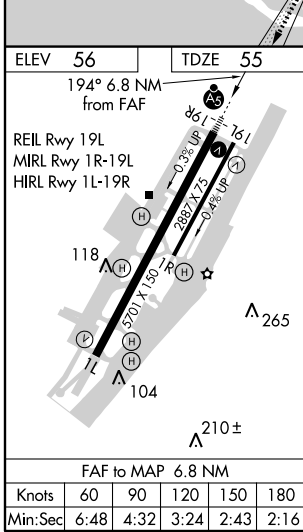
MALSR  MISSED APPROACH: Climb to 3000 via I-SNA south course to MINOE INT/I-SNA 10.9 DME and hold.

ATIS 126.0	SOCAL APP CON 121.3 263.1	JOHN WAYNE TOWER* 126.8 (CTAF) 0 379.9	GND CON (EAST) 120.8 (WEST) 132.25	CLNC DEL 118.0 121.85	UNICOM 122.95
----------------------	-------------------------------------	--	--	---------------------------------	-------------------------



SW-3, 17 NOV 2011 to 15 DEC 2011

SW-3, 17 NOV 2011 to 15 DEC 2011



ELEV 56	TDZE 55	194° 6.8 NM from FAF		
REIL Rwy 19L	MIRL Rwy 1R-19L	HIRL Rwy 1L-19R		
MINOE I-SNA 10.9	LEMN INT I-SNA 7.9	SNAKE INT I-SNA 11.4		
DYERS INT I-SNA 4.1	SAGER INT I-SNA 17.3	One Minute Holding Pattern		
* 255/24 200 (200-½)				
S-ILS 19R	1040/40	1040/50	1040-2½	985 (1000-2½)
S-LOC 19R	985 (1000-¾)	985 (1000-1)	984 (1000-½)	984 (1000-3)
CIRCLING	1040-1¼	1040-1½	1040-3	984 (1000-3)
DYERS FIX MINIMUMS				
S-LOC 19R	440/24	385 (400-½)	440/40	385 (400-¾)
CIRCLING	640-1	584 (600-1)	640-1½	584 (600-2)